
APPENDIX D
HISTORICAL AERIAL PHOTOGRAPH ANALYSIS

**TABLE 1 - AERIAL PHOTOGRAPHIC ANALYSIS
FORT WINGATE DEPOT ACTIVITY, NEW MEXICO**

The following table outlines the aerial photographic analysis conducted by Environmental Research, Inc. Findings are presented by year for each Solid Waste Management Unit (SWMU), Area of Concern (AOC), and the Hazardous Waste Management Unit (HWMU).

SWMU/AOC Number	Parcel Number	Description	Photo Date	Analysis Findings
HWMU	3	Hazardous Waste Management Unit	1935	NSF.
			1948	Two craters and a probable fill area are present. Drainage leads into the nearby arroyo.
			1952	Probable fill areas and two pits are present.
			1958	Three linear rows of objects and probable staining are present along burning lanes. An excavated area is present to the south. Open storage of crates or containers are present north of the site.
			1962	The excavated area remains. A linear stained/burned area is visible south of the excavation. Circular excavations or craters and probable debris are visible farther south.
			1966	The large excavation contains a significant amount of debris. Staining is present north and south of the excavation. Excavations or craters and a trench are present in the southern portion of the site. A probable fill area is present just outside the southeastern portion of the site.

SWMU/AOC Number	Parcel Number	Description	Photo Date	Analysis Findings
			1973	Two graded areas and a large excavation are present.
			1978	The large excavation contains debris. Two large graded areas with equipment or probable containers are present south of the excavation. A trench or ditch is also present. A bermed area is present along an access road in the south end of the site.
			1985	The excavation with debris remains. A pit is visible southwest of the excavation. Two large trenches with debris are present in the southern end of the site. The bermed area remains farther south.
			1991	A graded area with objects or equipment is present to the north. A graded area with four large revetments is present to the south. Five revetments (not annotated) are also present on the east side of the access road between AOC 92 and the HWMU.
			1993	No photo coverage.
			1997	Revetments or large pits are present along the north-south access roads.

SWMU/AOC Number	Parcel Number	Description	Photo Date	Analysis Findings
SWMU 14	3	Old Burning Ground and Demolition Landfill (Includes KGA-3, KGA-4, KGA-5, KP-2, KP-3, KP-4, Arroyo in Fenced Up Horse Valley, and Dump Pile)	1935	Two areas of disturbed ground and dark-toned material are present.
			1948	Multi-toned material (probable debris) is located along the western wall of Fenced Up Horse Valley. Erosional rills (not annotated) are present. A dark-toned ditch or trench is present to the south.
			1952	Multi-toned material (probable debris) is located along western wall of Fenced Up Horse Valley. Access road leads to an area of stacked material on the west side of site. A bermed area with dark-toned material is visible to the south.
			1958	A large graded area is present. Stacked materials (probable debris, crates, containers, etc.) are present at the southern end of the graded area.
			1962	A significant number of crates and containers are present onsite.
			1966	A significant amount of crates, containers and debris are present onsite including an area of debris in the arroyo. A ground scar and probable debris are visible south of the site.
			1973	Staining is evident in the southern end of the site.
			1978	No significant findings (NSF).

SWMU/AOC Number	Parcel Number	Description	Photo Date	Analysis Findings
			<p>1985</p> <p>1991</p> <p>1993</p> <p>1997</p>	<p>Probable debris (old crates or open bins) are present in the southern portion of the site. An access road leads to a cleared area with objects or equipment and several probable vehicles.</p> <p>NSF.</p> <p>No photo coverage.</p> <p>NSF.</p>
SWMU 15	3	<p>Old Demolition Area (includes Inactive EOD Area, KGA-1, KGA-2, Old OB/OD & Buried White Phosphorus Rounds, and Three Mounds in Fenced-Up Horse Valley)</p>	<p>1935</p> <p>1948</p> <p>1952</p> <p>1958</p> <p>1962</p>	<p>NSF.</p> <p>A graded area with mounded material is present. Three mounds of material are located in the eastern portion of the site.</p> <p>Disturbed ground occupies the western portion of the site. Three mounds of material are located in the eastern portion of the site.</p> <p>A loop access road is at the north end of the site; however, the area appears inactive and revegetating. The three mounds of material remain.</p> <p>The three mounds of material remain.</p>

SWMU/AOC Number	Parcel Number	Description	Photo Date	Analysis Findings
			<p>1966</p> <p>1973</p> <p>1978</p> <p>1985</p> <p>1991</p> <p>1993</p> <p>1997</p>	<p>Dark-toned material and three areas of mounded material are visible onsite.</p> <p>Three mounds of material remain.</p> <p>Three mounds of material remain.</p> <p>Three mounds of material remain.</p> <p>Three mounds of material remain.</p> <p>No photo coverage.</p> <p>NSF.</p>
SWMU 33	3	Waste Pile KP1	1935	NSF.
			<p>1948</p> <p>1952</p> <p>1958</p> <p>1962</p> <p>1966</p>	<p>NSF.</p> <p>NSF.</p> <p>NSF.</p> <p>NSF.</p> <p>NSF.</p>

SWMU/AOC Number	Parcel Number	Description	Photo Date	Analysis Findings
			<p>1973 NSF.</p> <p>1978 NSF.</p> <p>1985 NSF.</p> <p>1991 NSF.</p> <p>1993 No photo coverage.</p> <p>1997 NSF.</p>	
SWMU 74	3	Area 16 or Site 16 (Proposed Burning Ground) – to be addressed under the Kickout Area requirements unless the location is determined to be outside the Kickout Area boundary as defined Section IV.A	<p>1935 NSF.</p> <p>1948 NSF.</p> <p>1952 Access roads lead into cleared areas.</p> <p>1958 NSF.</p> <p>1962 NSF.</p> <p>1966 NSF.</p> <p>1973 NSF.</p>	

SWMU/AOC Number	Parcel Number	Description	Photo Date	Analysis Findings
			<p>1978</p> <p>1985</p> <p>1991</p> <p>1993</p> <p>1997</p>	<p>NSF.</p> <p>NSF.</p> <p>NSF.</p> <p>NSF.</p> <p>NSF.</p>
AOC 89	3	Feature 30 and Feature 34 on 1973 aerial photo (API-5) in 1995 Archive Search Report	1935	NSF.
			<p>1948</p> <p>1952</p> <p>1958</p> <p>1962</p>	<p>Three revetments with open storage. An access road leads to a cleared area to the north. A cleared area with erosional ditches is located to the south.</p> <p>Three revetments and a cleared area. Two ditches are present. An access road leads to a cleared area to the north.</p> <p>Each of the revetments has crates. A significant number of crates are present in the northern revetment.</p> <p>The revetments contain crates.</p>

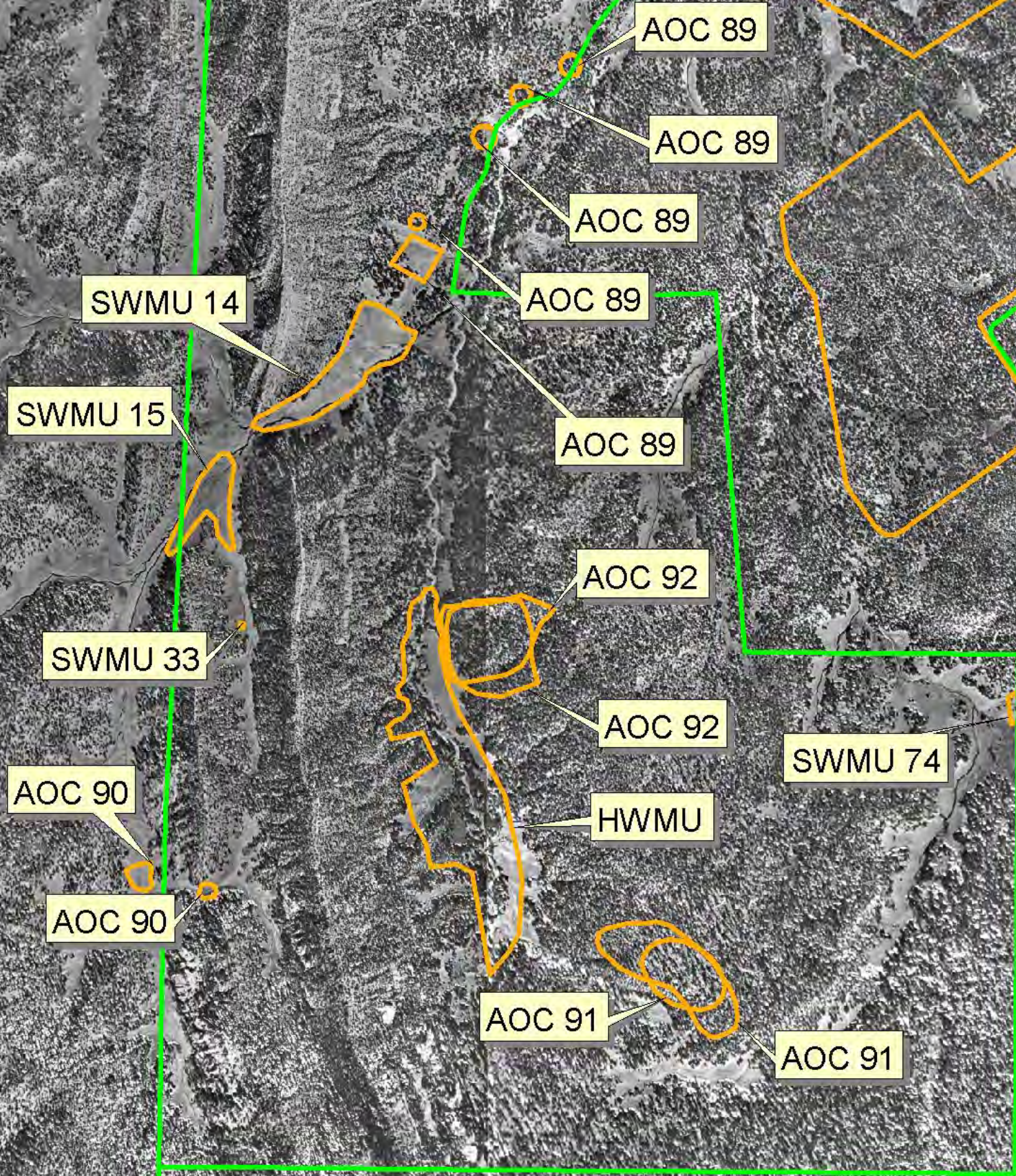
SWMU/AOC Number	Parcel Number	Description	Photo Date	Analysis Findings
			<p>1966</p> <p>1973</p> <p>1978</p> <p>1985</p> <p>1991</p> <p>1993</p> <p>1997</p>	<p>The revetments contain crates or objects. Crates or materials are also visible east of the access road. A graded area and a ground scar are present west of the area.</p> <p>The revetment remains. No other significant features are present.</p> <p>The revetments remain. Two of the revetments have</p> <p>The revetments remain. The southwest revetment contains objects inside and outside of the revetment.</p> <p>The revetments remain.</p> <p>No photo coverage.</p> <p>Revetments remain (no storage visible).</p>
AOC 90	3	Feature 36 on 1973 aerial photo (API-5) in 1995 Archive Search Report	<p>1935</p> <p>1948</p> <p>1952</p> <p>1958</p>	<p>NSF.</p> <p>No coverage.</p> <p>A dam and shallow pond present to the east. Western pond has not yet been constructed.</p> <p>The eastern dam and pond remain.</p>

SWMU/AOC Number	Parcel Number	Description	Photo Date	Analysis Findings
			<p>1962 NSF.</p> <p>1966 NSF.</p> <p>1973 Two impounded ponds are present.</p> <p>1978 Two ponds are present.</p> <p>1985 One of the ponds contains liquid, the other is empty.</p> <p>1991 NSF.</p> <p>1993 No photo coverage.</p> <p>1997 The ponds remain, but appear empty.</p>	
AOC 91	3	Feature 41 in the 1973 aerial photo (API-5) and Feature 27 on the 1978 historic aerial photo (API-7) in the 1995 Archive Search Report.	<p>1935 NSF.</p> <p>1948 NSF. Area wooded.</p> <p>1952 NSF. Area wooded.</p> <p>1958 New access roads lead into the area.</p> <p>1962 NSF.</p> <p>1966 NSF.</p>	

SWMU/AOC Number	Parcel Number	Description	Photo Date	Analysis Findings
			<p>1973</p> <p>1978</p> <p>1985</p> <p>1991</p> <p>1993</p> <p>1997</p>	<p>Access roads lead into wooded area. Probable debris or objects are present on east side of access road.</p> <p>The area is scarred. An excavated area is also visible.</p> <p>Access to the area appears active. Several scarred areas are present near the access road. A cleared area is present northwest of the site.</p> <p>Probable pits are present within the ground scarred area.</p> <p>No photo coverage.</p> <p>Access roads remain within the site area; however, no other significant features are present.</p>
AOC 92	3	Feature 31 on the 1973 historic aerial photo (API-5) and Feature 21 on the 1978 aerial photo (API-7) in 1995 Archive Search Report	<p>1935</p> <p>1948</p> <p>1952</p> <p>1958</p>	<p>NSF.</p> <p>Disturbed area with craters and a large excavated area.</p> <p>Disturbed ground with craters.</p> <p>Excavations and/or craters are present throughout the site.</p>

SWMU/AOC Number	Parcel Number	Description	Photo Date	Analysis Findings
			1962	Dark-toned material or debris is present in an excavation in the northern portion of the site. Craters and excavations are present.
			1966	Crates and debris are visible onsite.
			1973	Disturbed ground, craters and probable debris are present onsite.
			1978	Craters and disturbed ground are present.
			1985	An excavated area with probable debris is in the northern portion of the site; however, the area appears inactive. Several other large excavated areas are present.
			1991	An excavated area with debris is visible in the northern portion of the site.
			1993	No photo coverage.
			1997	NSF.

1935



1948

AOC 89

AOC 89

AOC 89

AOC 89

SWMU 14

SWMU 15

AOC 89

AOC 92

SWMU 33

AOC 92

SWMU 74

AOC 90

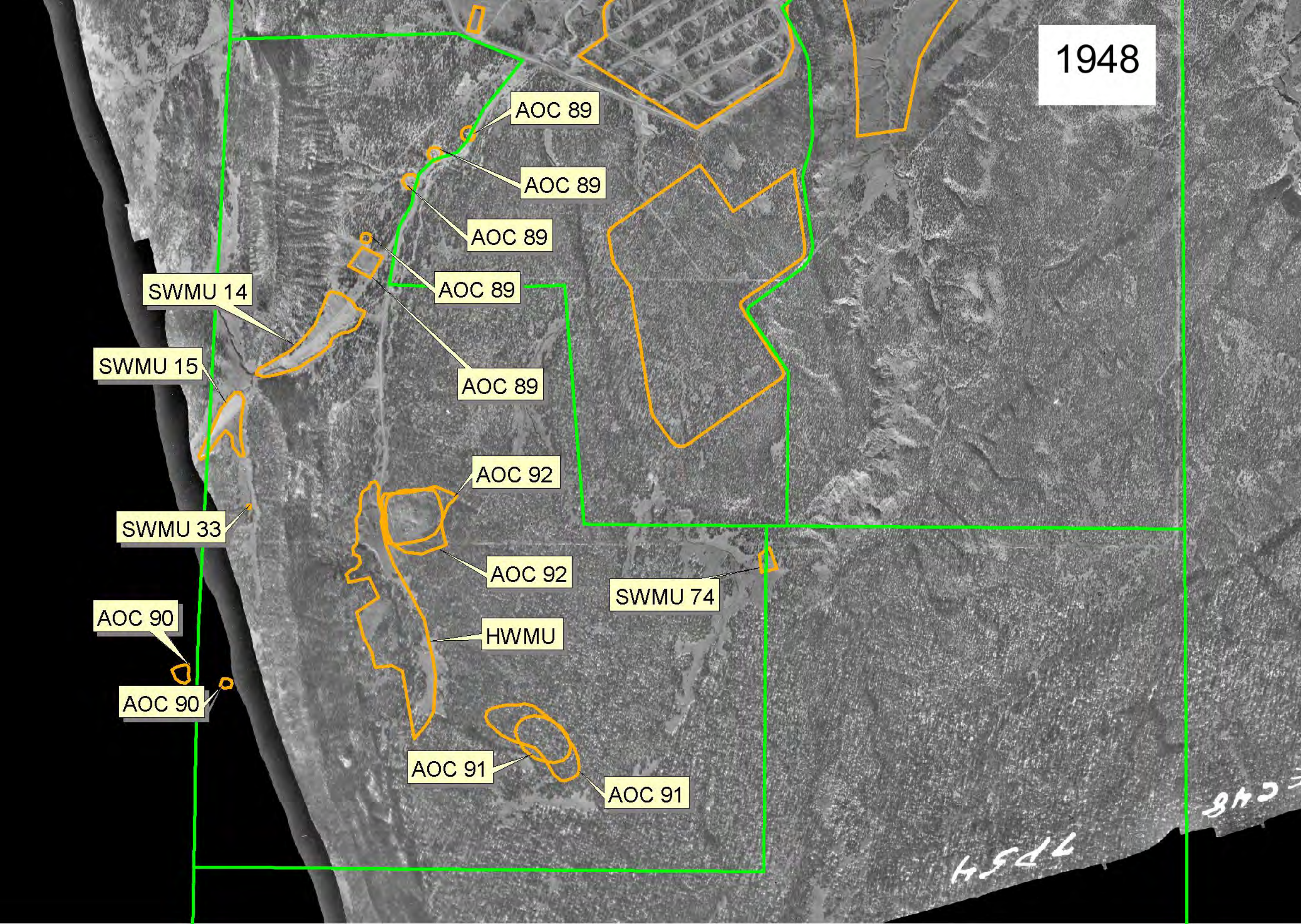
HWMU

AOC 90

AOC 91

AOC 91

7P54
C48



1952

SWMU 14

SWMU 15

SWMU 33

AOC 90

AOC 90

AOC 89

AOC 89

AOC 89

AOC 89

AOC 89

AOC 92

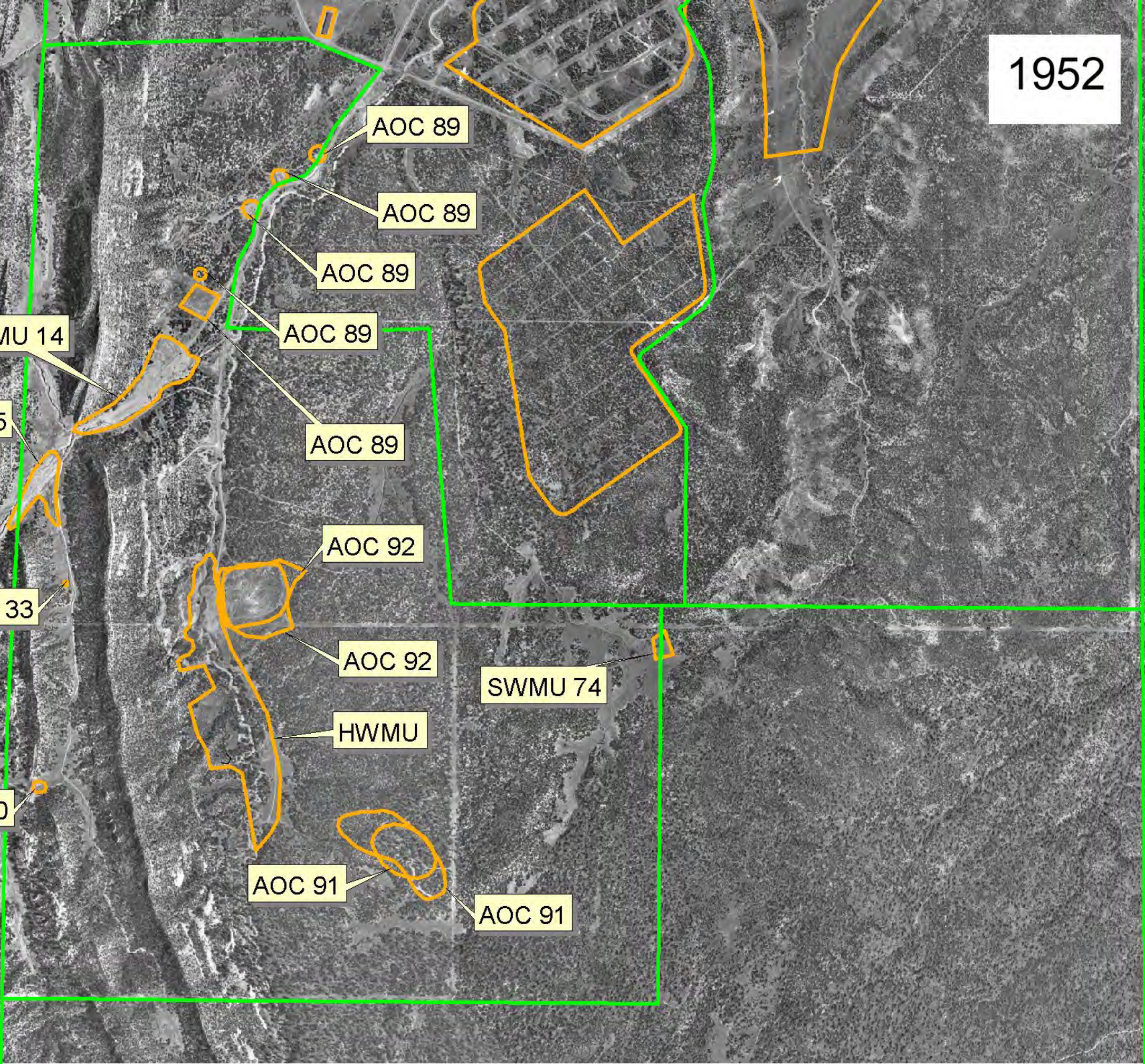
AOC 92

HWMU

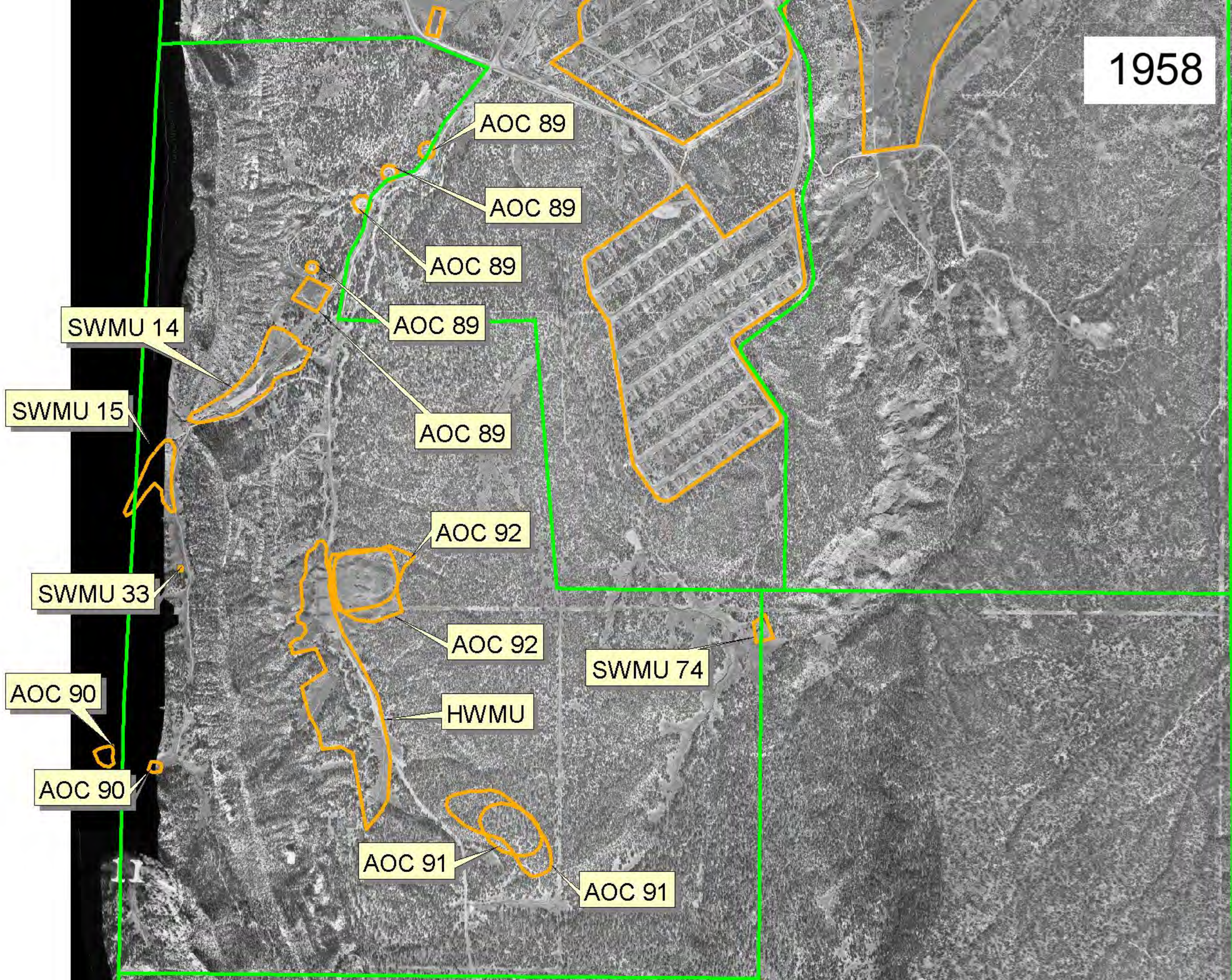
AOC 91

AOC 91

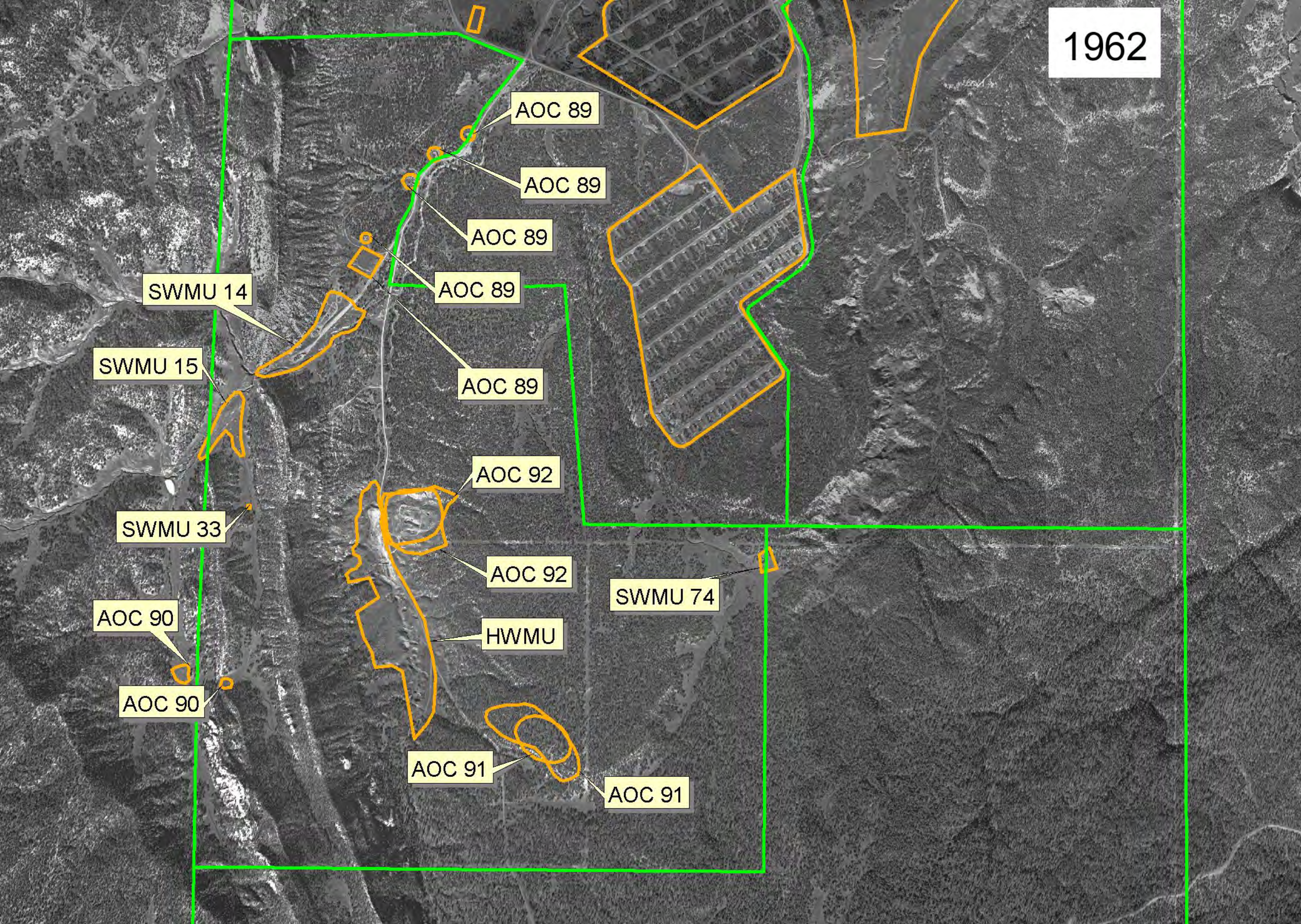
SWMU 74



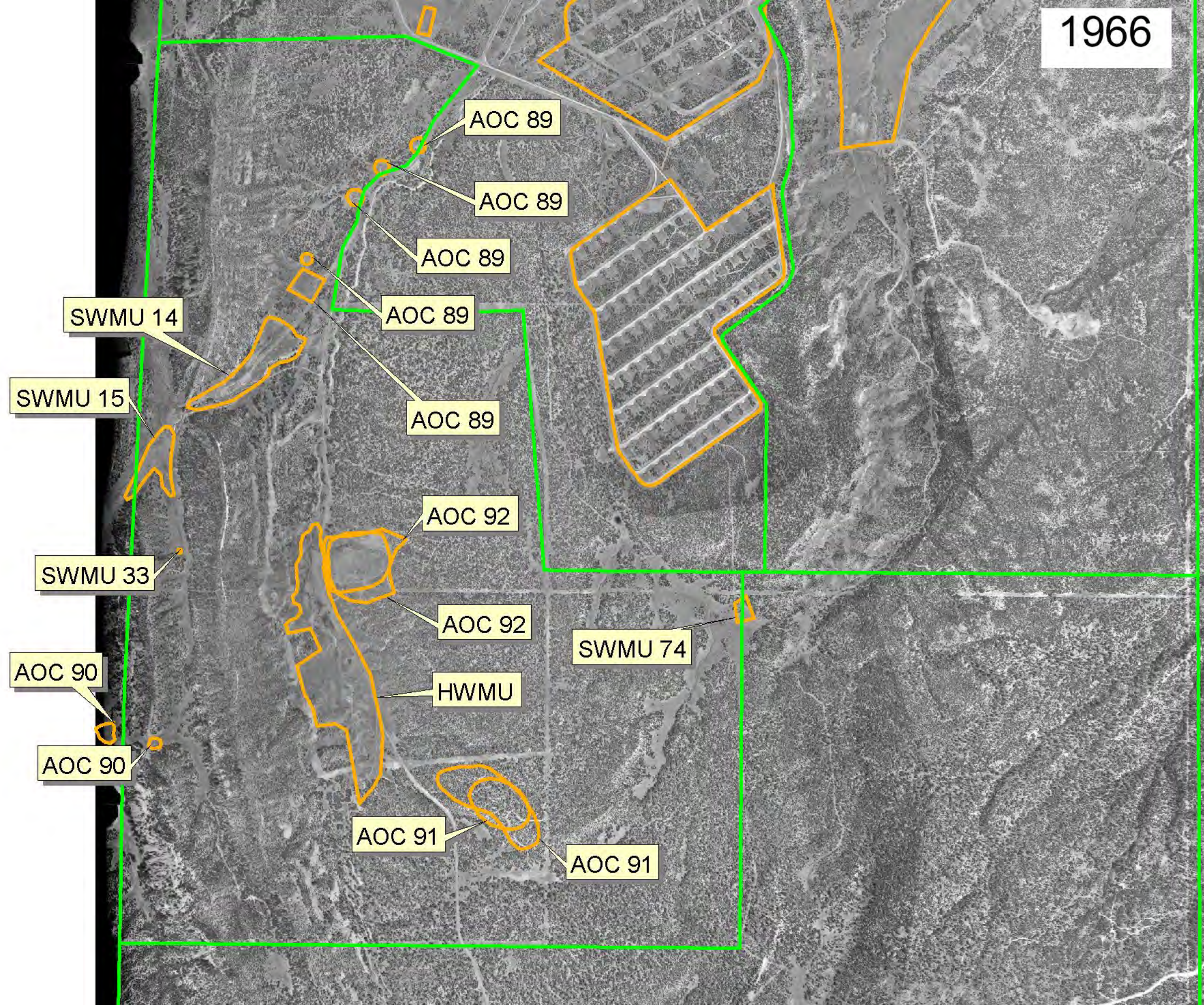
1958



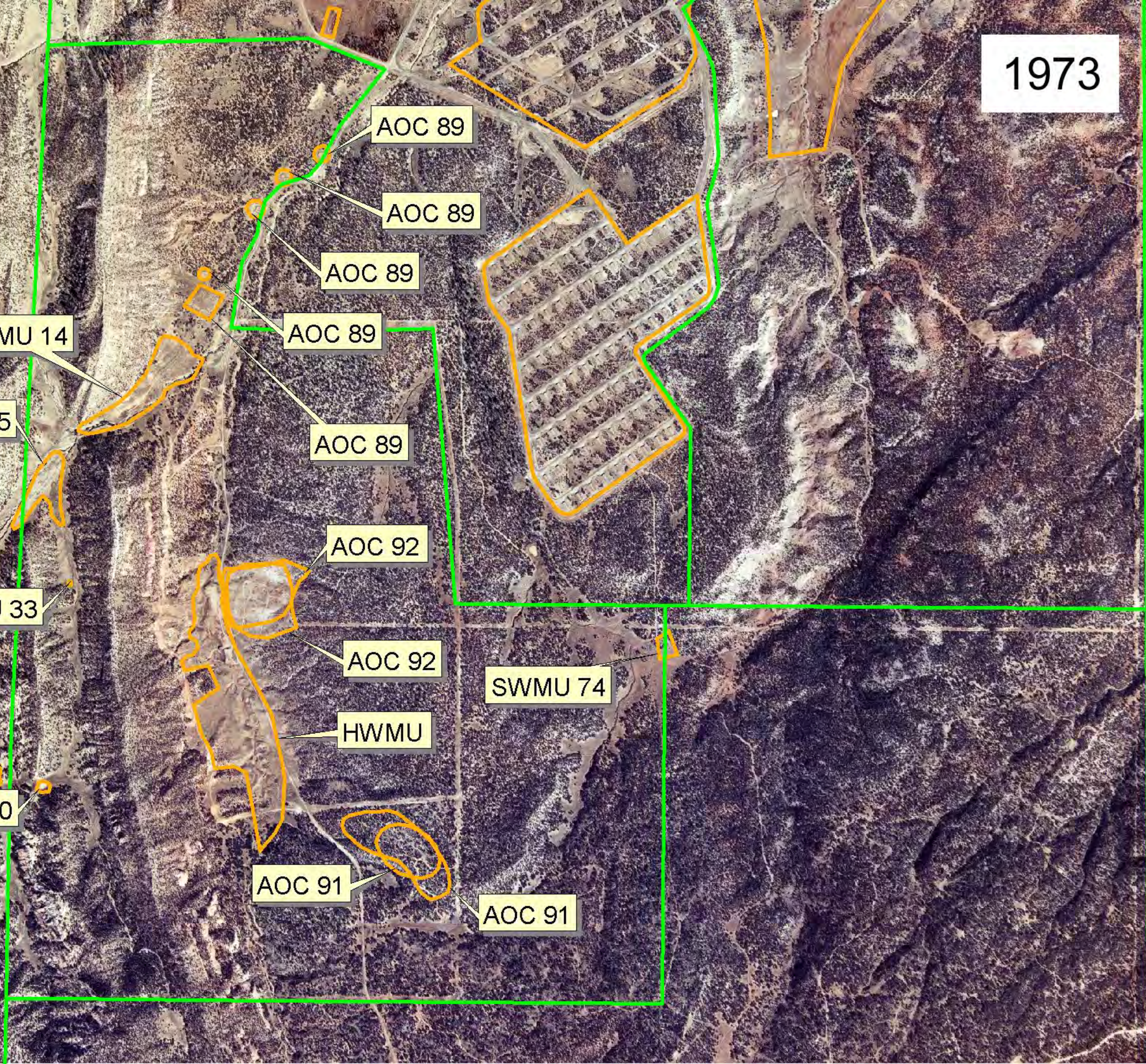
1962



1966



1973



AOC 89

AOC 89

AOC 89

AOC 89

SWMU 14

SWMU 15

AOC 89

AOC 92

SWMU 33

AOC 92

SWMU 74

AOC 90

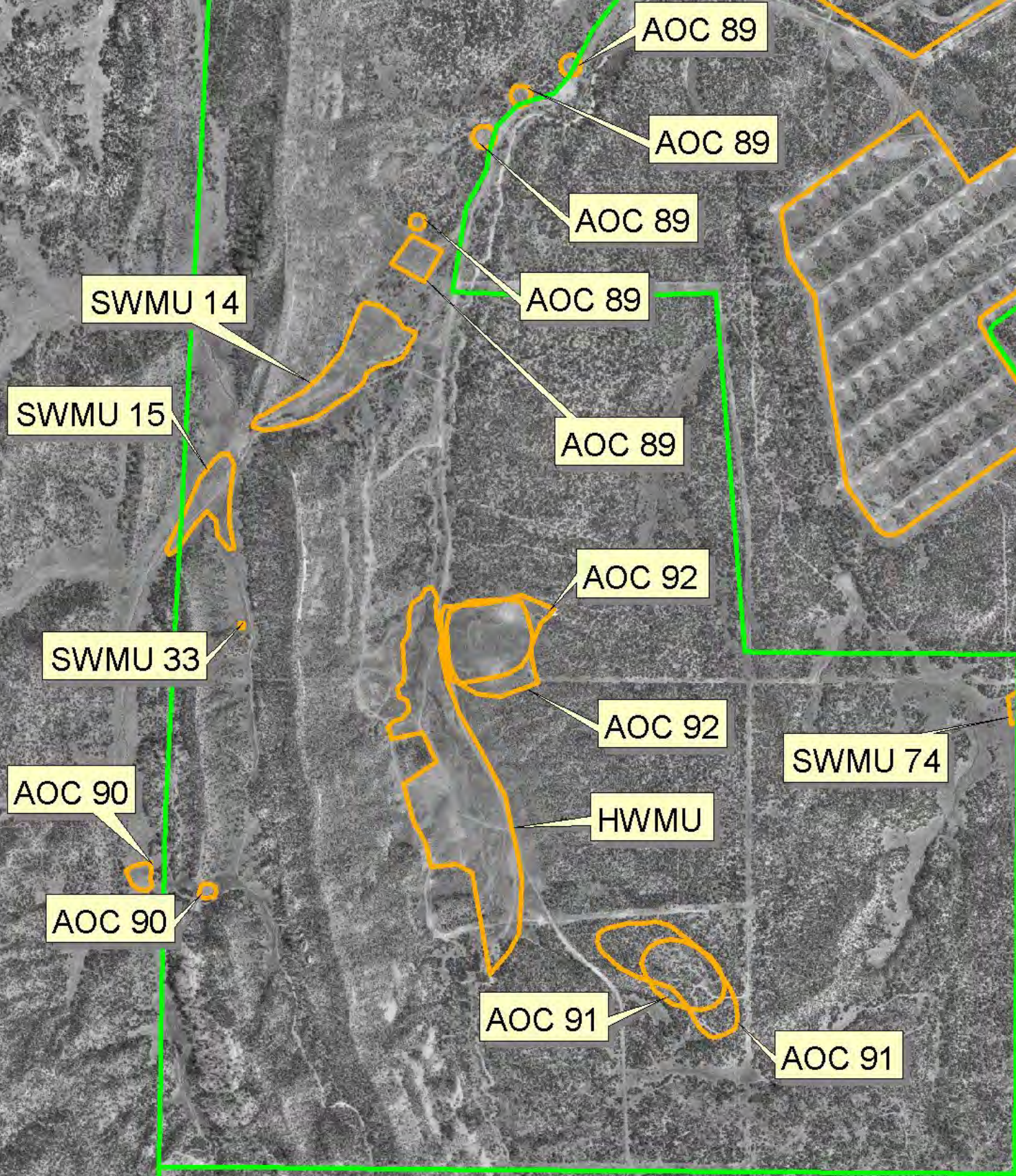
HWMU

AOC 90

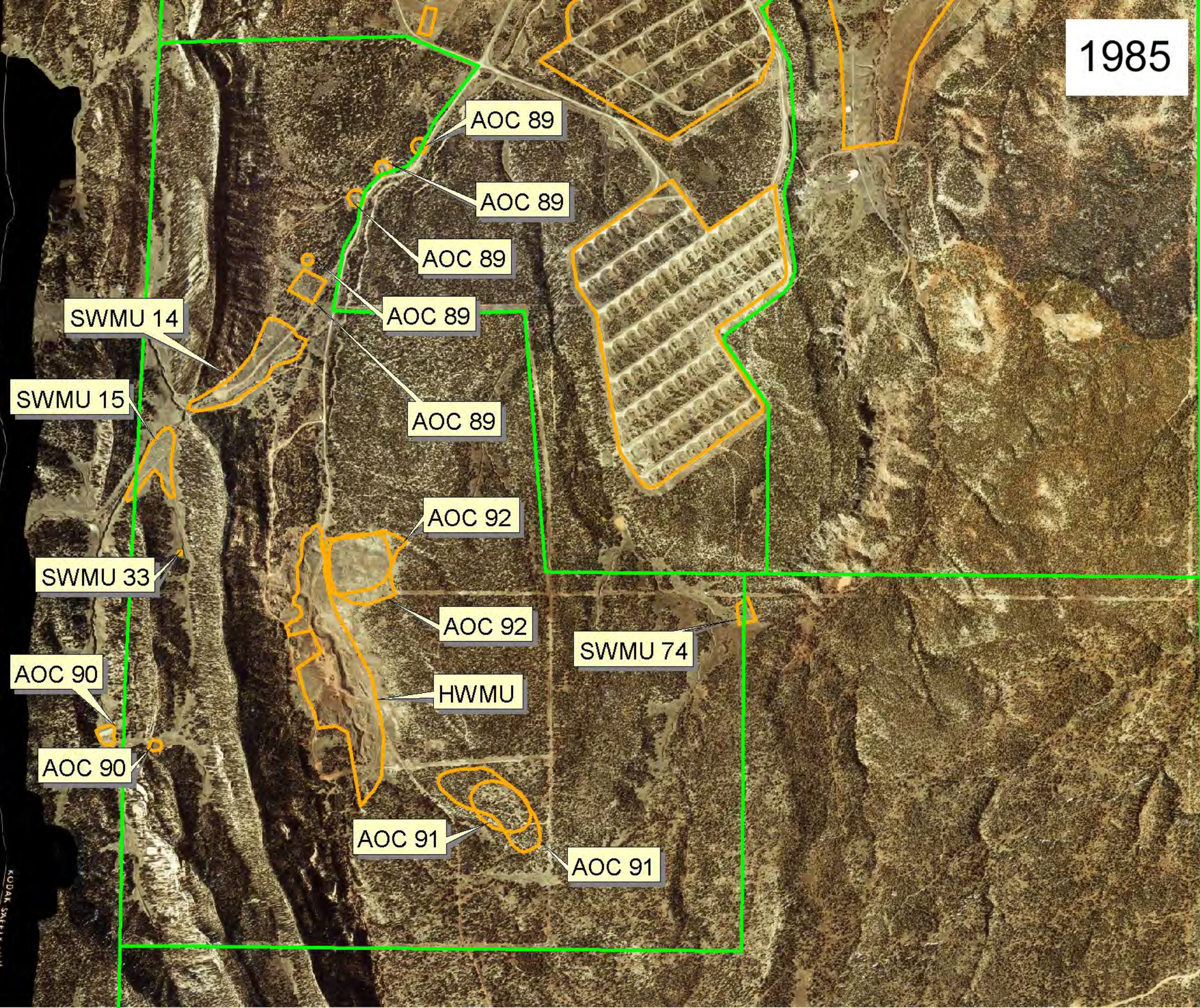
AOC 91

AOC 91

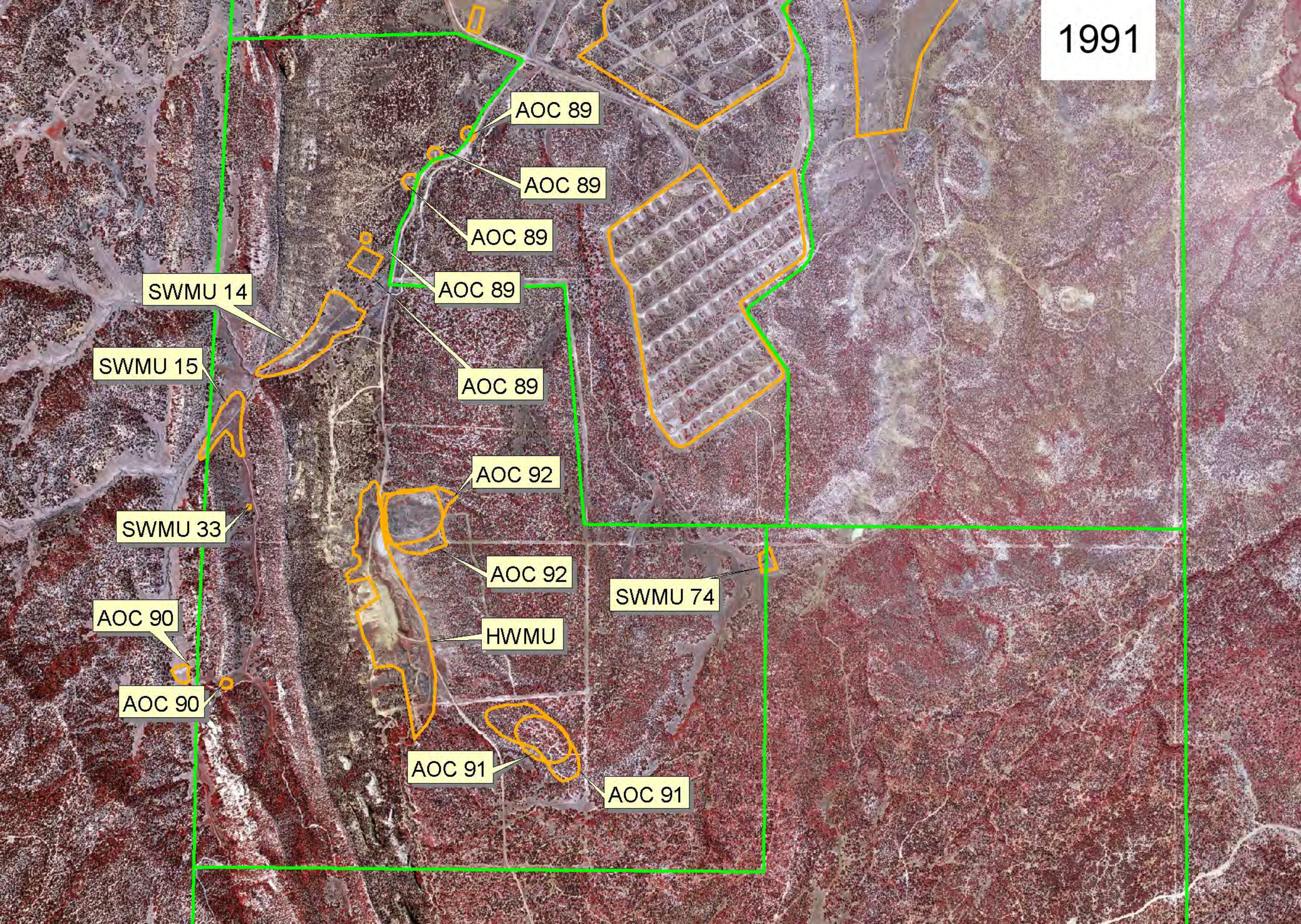
1978



1985



1991



AOC 89

AOC 89

AOC 89

AOC 89

SWMU 14

SWMU 15

AOC 89

AOC 92

SWMU 33

AOC 92

SWMU 74

AOC 90

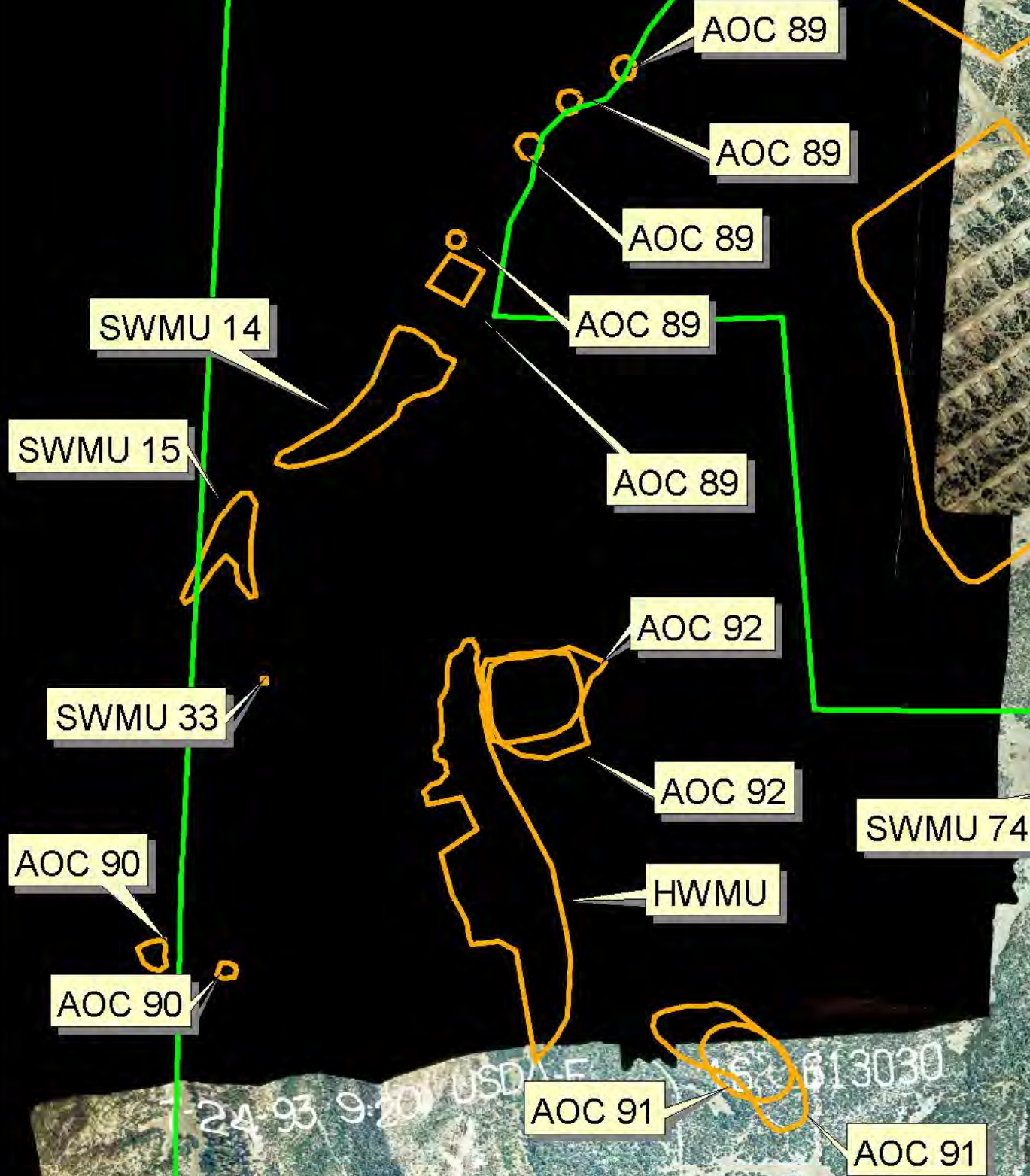
HWMU

AOC 90

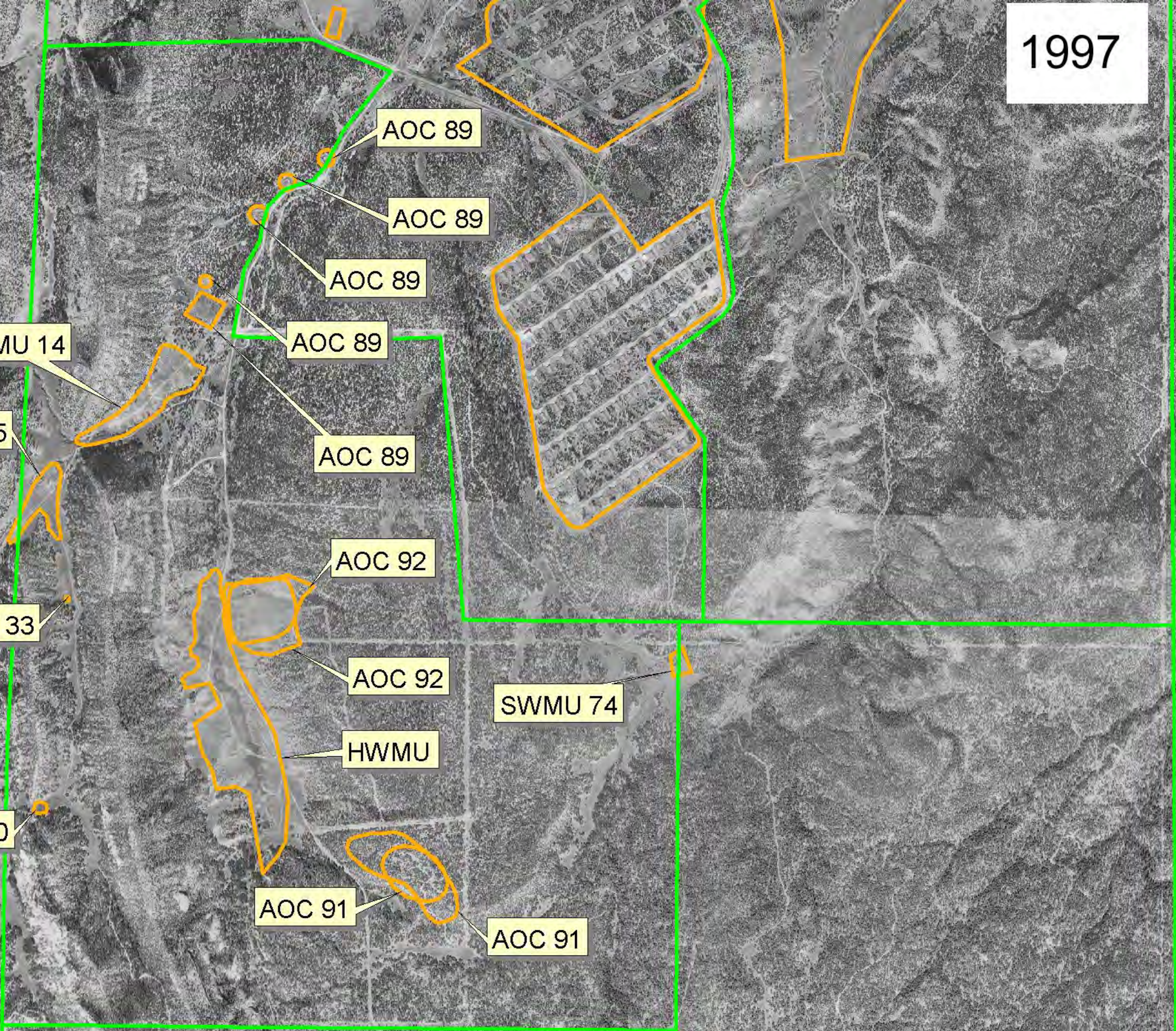
AOC 91

AOC 91

1993



1997



SWMU 14

AOC 89

AOC 89

AOC 89

AOC 89

SWMU 15

AOC 89

AOC 92

SWMU 33

AOC 92

SWMU 74

AOC 90

HWMU

AOC 90

AOC 91

AOC 91

2005

